

## ANTI-SPY TOOL DETECTION OF HIDDEN CAMERAS AND MICROPHONE

Prof. Tejal Shinde<sup>1</sup>, Rutuja Bhombe<sup>2</sup>, Nandini Jadhav<sup>3</sup>, Harsh Tiwari<sup>4</sup>, Nuzhat Inamdar<sup>5</sup>

<sup>1</sup>Lecturer, Department of Information Technology, Pimpri Chinchwad Polytechnic, Pune

<sup>2,3,4,5</sup>Student, Department of Information Technology, Pimpri Chinchwad Polytechnic, Pune

### ABSTRACT

This paper aims to help people maintain their safety and security by building an application with the help of which spy cameras can be easily detected. It finds application in courtrooms and other places where cameras are prohibited. The laser beam is retroreflected by the camera, and photos are taken, which are then used to detect the camera. Normal led light scans the area to be protected. Finally, colour segmentation is used to locate the green component that represents the camera's current location

**Keywords:** location , camera, detect ,application, protection.

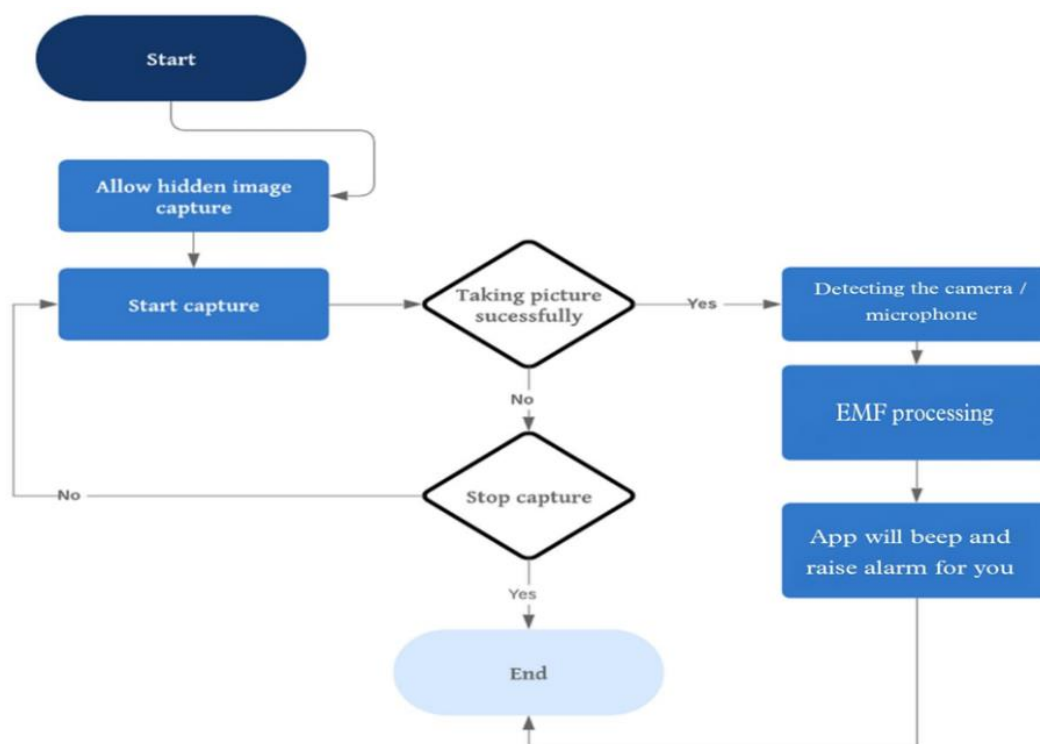
### 1. INTRODUCTION

A technology, the use of mobile phones has so become vast that they are allowed to use in private areas or restricted venues like offices, conference halls, malls, But even in terms of that, there are some places where they do not permit individuals to procure their portable phones inside a open or private zone, citing the argument "this can be a restricted place and please submit your gadgets to avoid any disruption." There are some fascinating creatures in society that exist just to "take advantage of the people and turn it into a trade." When it comes to security and security, women's lives play a critical part. There are cameras installed in some areas, and there is no doubt that if a spy camera is there, everything will be detected. The one that is highly paramount these days is amcorders or cameras at concealed places. The information is made open, posturing a danger to their lives

### 2. METHODOLOGY

By distinguishing concealed cameras, the Covered up Camera Locator can secure your protection. While staying at a hotel with your family, you may use the hidden camera detection app to locate any spy cameras installed in the rooms. If you're going to a public venue, such as a shopping mall, you may use a spy camera detector to examine the changing rooms for concealed cameras. If you are out of town with your family and sleeping in a private room or hotel room, you may use a hidden camera and hidden microphone detecting software to protect your privacy. Object Detector and Classifier with .TENSORFLOW-Object Detector and Classifier with TensorFlow Library model Object Detection and Classification with TensorFlow Uses the Google TensorFlow Machine Learning Library model to detect object with your Mobile cameras in real-time, displaying the label and overlay on the camera image.

#### 2.1 Flowchart-



### 3. SYSTEM REQUIREMENTS

#### a. Software Requirements

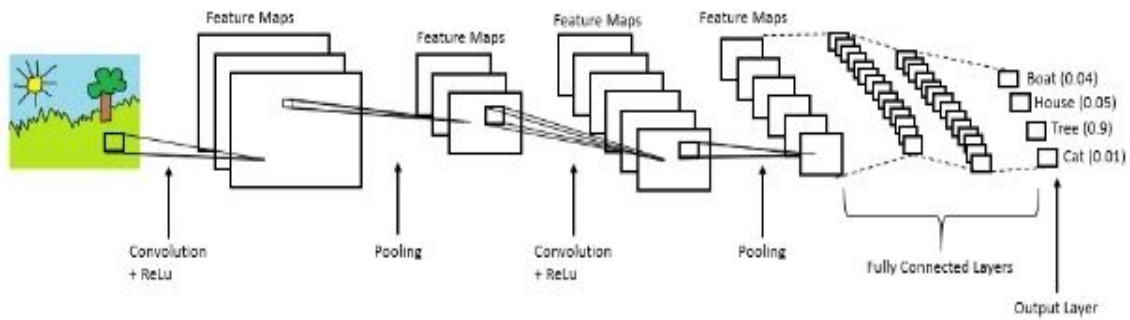
<b>Operating System</b>	<b>Windows 11</b>
<b>Front End</b>	<b>XML and Android programming</b>
<b>Language used</b>	<b>Android(Java code)</b>
<b>Software used</b>	<b>android studio 2021.2.1 (Chipmunk)</b>
<b>Machine learning</b>	<b>TensorFlow 2.8.0</b>

#### b. Hardware Requirements

<b>Processor</b>	<b>1.6 GHz or Faster Processor</b>
<b>RAM</b>	<b>1.5 GB</b>
<b>Disk Space</b>	<b>4GB of Available Hard Disk</b>
<b>Graphic</b>	<b>DirectX 9-Capable Video Card</b>
<b>Display</b>	<b>1024X 768 or Higher Resolution</b>

### 4. SYSTEM MODULES

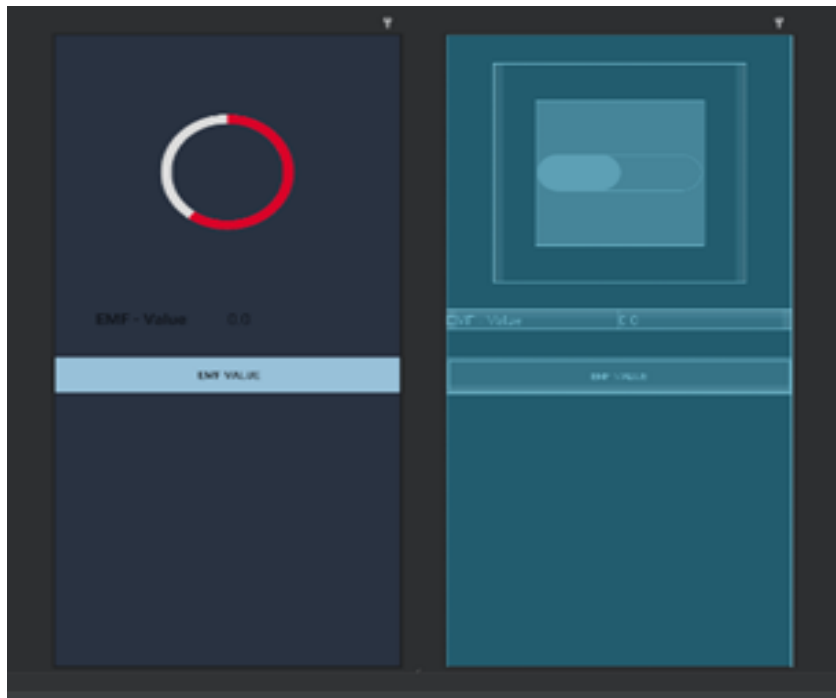
- 4.1 Emf detector** This app examines the magnetic activity in the vicinity of the device. This programme will beep and raise an alarm if magnetic activity appears to be comparable to that of a camera, so you may examine further. Electrical devices have a magnetic field, which our software monitors with a magnetometer sensor to give you a sense of whether or not there are any possible electronic gadgets in your vicinity. Instead of utilising a manual listening device detector, this programme may be used to locate probable spy gadgets. The magnetic field value is determined by the magnetometer sensor's quality and location. Do not depend exclusively on its readings; instead, personally search the area for concealed cameras and microphones. To use the app, your phone must have a magnetometer sensor.
- 4.2 manual detection** What good is this software if I have to manually detect it? If the app detects magnetic activity that is comparable to that of the camera, it will alert you. If the app beeps, look for a lens. The app cannot detect if the suspect is wearing a lens, but your eyes can; similarly, the app cannot see magnetic/ electromagnetic activity, but it can analyse it! The app will assist you many times, but it may also fail at times, requiring your involvement.
- 4.3 Object detection** Object Detection is intended with TensorFlow Library model Object Detection and Classification with TensorFlow Uses the Google TensorFlow Machine Learning Library model to detect object together with your Mobile cameras in real-time, displaying the label and overlay on the camera image. TensorFlow is an open-source end-to-end platform for creating Machine Learning applications. it's a symbolic math library that uses dataflow and differentiable programming to perform various tasks focused on training and inference of deep neural networks. It allows developers to form machine learning applications using various tools, libraries, and community resources. TensorFlow is that the leading library of all since it's built to be open for everyone. Tensorflow library consolidates distinctive API to built at scale profound learning engineering like CNN or RNN. TensorFlow depends on chart computation; it permits the designer to picture the advancement of the neural arrange with Tensorboard. This device is valuable to investigate the program. At long last, Tensorflow is developed to be sent at scale. It runs on CPU and GPU.



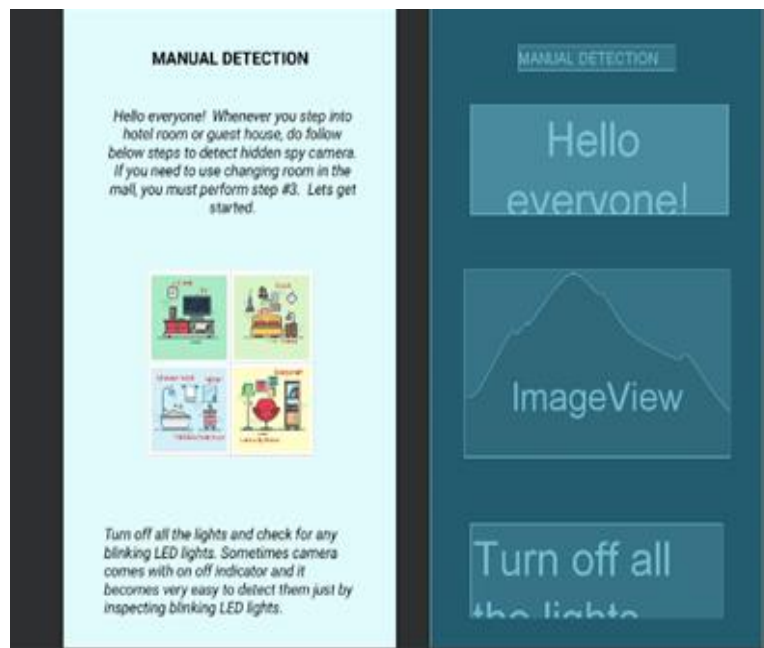
Tensor flow Architecture

## 5. RESULTS

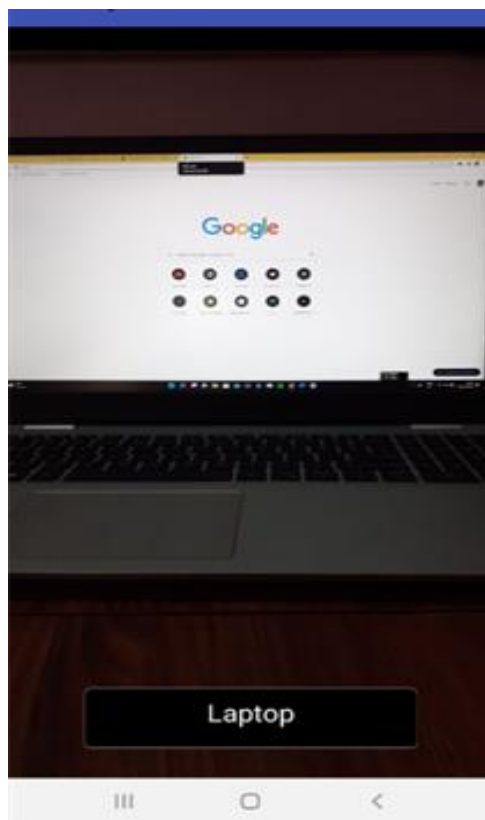
5.1 emf detector detecting the camera if the magnetometer speed expels beyond the range (80-120)



5.2 Manual detection



### 5.3 Object detection -working of object detection



## 6. CONCLUSION

This paper surveys as an approach for detecting the cameras in the cluttered environments and can also be detected when lights turned off using flashes (an old practical method) for getting prevented victim from the Scandal issues. This application provides an assurance for maintaining the security to the top level extent in our lives

## ACKNOWLEDGEMENTS

The successful completion of any task would be incomplete, without the mention of people who are foremost, we would like to express our sincere gratitude to our research supervisors who has in the literal sense, guided and supervised us. Their guidance deserves much more than the credit on the successful completion of our project and also for giving us an opportunity to implant our skills and for providing the specified offer assistance and co- operation to total the report. We are obliged with a profound sense of appreciation for the steady motivation and important direction all through the work. We are humbly thankful to Prof. T.R.Shinde, H.O.D., Dept of Information Technology for providing us a Proper guidance and high bandwidth round the clock responsible for the completion of this work.

## 7. REFERENCES

- [1] ian Liu, Ziyu Liu, Jun Huang, Rui Tan, Zhen Tan: Detecting Wireless Spy Cameras Via Stimulating and Probing.
- [2] <http://ai2.appinventor.mit.edu/>
- [3] K. Parvateesam, G. A. Arun Kumar: Presence of Active Mobile Phones and Hidden Camera Detection, International Journal of Science, Engineering and Technology Research (IJSETR), Volume 6, Issue4, April 2017.
- [4] Murtaza Taj, Andrea Cavallaro: Multi-Camera Scene Analysis using an Object-Centric Continuous Distribution Hidden Markov Model, 2007 IEEE International Conference on Image Processing.
- [5] Chien-Cheng Lee ,Yi-Fang L: Computer Vision Techniques for Hidden Conditional Random Field-Based Mandarin Phonetic Symbols I Recognition, 2011 International Conference on Broadband and Wireless Computing , Communication and Applications.
- [6] Timothy Callemeyn, Wiebe Van Ranst, Toon Goedemé: The autonomous hidden camera crew, 2017 Fifteenth IAPR International Conference on Machine Vision Applications (MVA).
- [7] Brent Lagesse , Kevin Wu, Jaynie Shorb, Zealous Zhu- Detecting Spies in IoT Systems using Cyber-Physical Correlation, 2018 IEEE 28th Canadian Conference on Electrical and Computer Engineering (CCECE).
- [8] Brent Lagesse, Kevin Wu, Jaynie Shorb, Zealous Zhu- Automated Hidden Sensor Detection in Sensor-Rich Spaces, 2018 IEEE 28th Canadian Conference on Electrical and Computer Engineering (CCECE)